



## Principal's message

As we welcome the month of March, we are also embracing the gradual arrival of warmer weather and the promise of spring. This month brings with it significant milestones for our school community. We have our progress reports coming up, providing a valuable opportunity to reflect on our students' growth and achievements. Parent-teacher conferences are also on the horizon, offering a chance for meaningful discussions about your child's progress. And, of course, we have our much-anticipated spring break ahead, providing a well-deserved time for rest and rejuvenation. Let's embrace this month with enthusiasm, celebrating our students' accomplishments and looking forward to the exciting opportunities that lie ahead.

I would also like to take a moment to thank all the parents who joined us for our Parents Literacy Night. Your support and involvement make a huge difference in our school community.

We are excited to announce that we are updating our communication tool. Starting soon, we will be using Toddle instead of Google Classroom. For Grade 4 and 5 parents, we recently held an information session at the school to explain this change. On March 17, we will hold a webinar session for Junior-K to Grade 3 parents. Please be sure to watch for an email or Google Classroom update from your child's homeroom teacher with more details.

Additionally, parents will be able to access their child's progress reports on Toddle starting on March 18. Our Parent-Teacher Conferences will be held on March 20 from 3:30 PM to 6:00 PM and March 21 from 8:00 AM to 12:30 PM. Please be sure to book a time slot that works best for you.

Thank you once again for your continued support and involvement in our school community. Let's make this month memorable!



## Core value and Learner attribute of the Month

### Resiliency

Resiliency is important in the constant changing pace of life. Persevering in the face of external and internal stressors is learned by directing one's energy towards positivity and productivity.

### IB Learner attribute

### Risk Takers

We approach uncertainty with forethought and determination; we work independently and cooperatively to explore new ideas and innovative strategies. We are resourceful and resilient in the face of challenges and change.

# Important announcements



## Hola Mahalla March 14–16

Hola Mahalla is an annual Sikh festival celebrated primarily in Punjab . It takes place in March, the day after Holi, the Hindu festival of colors. Hola Mahalla was introduced by Guru Gobind Singh, in the late 17th century. It is a time for Sikhs to come together to celebrate faith, valor, and the teachings of Guru Sahibs .

During the festival, Sikhs participate in a variety of activities, including Gatka (martial arts displays), horseback riding, wrestling matches, and military-style exercises to showcase strength, bravery, and unity. Hola Mahalla also involves singing devotional hymns and kirtans, engaging in prayers and seva (selfless service), and attending community meals (Langar).

Hola Mahalla is not only a celebration of Sikh culture but also an expression of spiritual devotion and community spirit. The main event takes place at Anandpur Sahib, the birthplace of Khalsa, but it is also observed around the world.

### Dates to remember

March 11: Jr AM, KG C & D field trip to art gallery

March 13: Jr PM , KG A & B field trip to art gallery

March 12: Gr 4 in school field trip (How can forces affect objects from a distance?)

March 14th, Pi Day

March 14th: Grade 5 Royal Alberta Museum field trip

March 18th, Progress report can be viewed on Toddle

March 20 PTC: 4:00 pm -6:00 pm ( Full day for students)

March 21st, No School for students (PTC 8:00am -12:00pm)

March 20th & 21 PTC

Spring break March 24th-March 30th.

March 31st PD : NO SCHOOL FOR STUDENTS

**Please check Toddle and Google classroom  
for everyday updates**

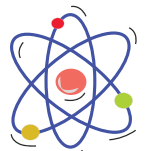
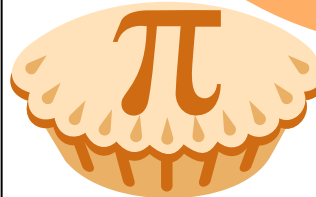
### Gratitude Note

We would like to extend a heartfelt thank you to Mrs. Rajveer Kaur Aulakh and Kawaljit Mehal for their invaluable support during our book fair. Your dedication, hard work, and enthusiasm made the event a great success. We truly appreciate your time and effort in helping us create a memorable experience for our students and school community. Thank you once again for your support.



## Pi day

In the late 1980s, Larry Shaw, a staff physicist, tinkerer and media specialist at the Exploratorium in San Francisco, came up with what may be the world's nerdiest holiday: Pi Day. Now celebrated globally each March 14, Pi Day salutes the popular mathematical constant pi, an endless decimal representation used in the measurement of a circle whose first three digits are 3.14. Students can bring Pie for snack and teachers will do Pi activities on this day.



## Science fair

We are excited to announce that our Science Fair is fast approaching! Teachers will be guiding students through their science fair projects, helping them develop their ideas and prepare for their presentations. To ensure your child is well-prepared, we kindly ask that you have a conversation with them about the progress of their project. This will help them feel confident and ready for the big day.

The Science Fair will take place at the new location on April 4, 2025, from 6:00 PM to 8:00 PM. We will have a designated time for each group of parents to visit:

- Kindergarten and Grade 1 parents: 6:00 PM - 7:00 PM
- Grade 2 to Grade 5 parents: 7:00 PM - 8:00 PM

We are looking forward to seeing all of our students' hard work come to life at this exciting event. Thank you for your support as we celebrate their scientific discoveries!

